



# Resolution Copper Project and Land Exchange Environmental Impact Statement

## Overview

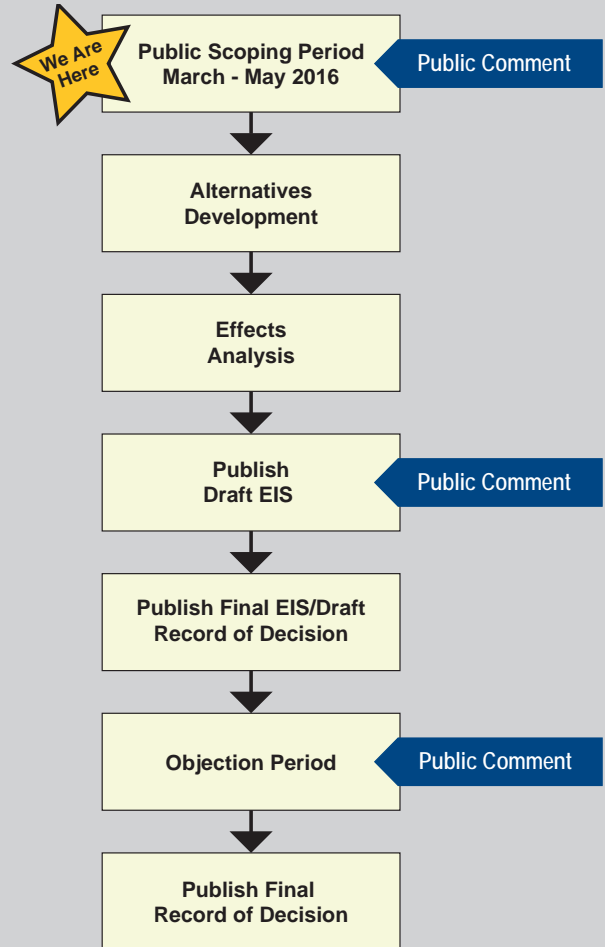
The Tonto National Forest (TNF) is preparing an environmental impact statement (EIS) to consider and disclose the environmental effects from: 1) approval of a proposed plan of operations for mining activities on National Forest land; 2) the exchange of land between Resolution Copper and the United States; and 3) any necessary amendments to the Tonto National Forest Land and Resource Management Plan.

Resolution Copper submitted the General Plan of Operations (GPO) to the Forest Service in November 2013. The proposed GPO would authorize surface disturbance on Forest Service lands associated with development, mining, and processing of copper and molybdenum. In December 2015, Congress passed the Carl Levin and Howard P. 'Buck' McKeon National Defense Authorization Act for Fiscal Year 2015 (NDAA). Section 3003 of this law authorizes and directs the Secretary of Agriculture to administer a land exchange, which will convey 2,422 acres of Forest Service land in the area of the proposed mine to Resolution Copper in exchange for 5,344 acres of private land on 8 parcels located elsewhere in eastern Arizona.

Approval of the proposed GPO would be a major federal action subject to the National Environmental Policy Act of 1969 (NEPA). Accordingly, the Forest Service will prepare an EIS to consider and publicly disclose the environmental effects of the proposed action. Section 3003 of the NDAA also requires the Secretary to prepare a single EIS prior to conveying the federal land, to be used as the basis for all decisions under federal law related to the proposed mine. The TNF is tasked with completion of the EIS.

The TNF is seeking comments from the public on the proposed project to help in determining the scope of the EIS environmental analysis. The Forest Service will use the public comments to identify significant issues for analysis and potential project alternatives. **The scoping comment period is from March 18, 2016 to May 17, 2016. Your comments will be most useful if received by the closing date of the scoping comment period.**

## The NEPA Process



## How to Submit Comments

Comments on the proposed project can be submitted in a variety of ways:

- Attend an open house public meeting
- Submit a comment at [www.ResolutionMineEIS.us](http://www.ResolutionMineEIS.us)
- Email written comments to:  
comments@ResolutionMineEIS.us
- Send written comments via postal mail to:  
Resolution EIS Comments  
P.O. Box 34468, Phoenix, AZ 85067-4468
- Send fax or voicemail to 866-546-5718

## For More Information

Visit the website [www.ResolutionMineEIS.us](http://www.ResolutionMineEIS.us) or call Mark Nelson, Tonto National Forest, 602-225-5222

# Proposed Action

## The Mining Proposal

- Expected to take 10 years to construct, have a 40 year operational life, followed by 5-10 years of reclamation
- Expected to mine approximately 50 billion pounds of copper, from a deposit located 5,000 to 7,000 feet underground
- Ore would be removed using an underground mining technique known as panel caving. Access to the ore body would be from vertical shafts in an area known as the East Plant Site, near Oak Flat. The ground surface above the ore body is expected to subside or drop because of the underground mining.
- Crushed ore would be transported underground to an area known as the West Plant Site for processing. The West Plant Site is the location of the old Magma Mine in Superior.
- Once processed, copper concentrate would be pumped as a slurry about 22 miles to a filter/loadout facility. The slurry pipelines follow an existing right-of-way known as the Magma Arizona Railroad Company (MARRCO) corridor. The MARRCO corridor would also include: an upgraded rail line, new water pipelines, new utility lines, several intermediate pump stations, and an estimated 30 new groundwater wells. From the filter/loadout facility, copper concentrate would be sent to market using rail or trucks.
- Tailings—the waste material left over after processing--would be pumped as a slurry 4.7 miles from the West Plant Site to a tailings facility. The tailings facility would eventually occupy about 4,400 acres of Forest land.
- Power to the project would be supplied by Salt River Project. Large 230-kV powerlines would be located along new and existing rights-of-way
- Access to the mine would be provided by existing roads. Magma Mine Road would eventually be relocated due to expected subsidence.

## The Land Exchange

Section 3003 of the NDAA authorizes the exchange of specified federal lands if Resolution Copper offers to convey to the United States the specified non-federal land. Resolution Copper has formally offered to do so. The following summarizes the land parcels that will be exchanged.

The 2,422-acre Oak Flat parcel will be transferred from the Department of Agriculture to Resolution Copper.

The following parcels will be transferred from Resolution Copper to the Department of Agriculture:

- 110 acres near Superior, Arizona, known as the Non-Federal Parcel-Apache Leap South End, to be administered by the TNF
- 148 acres in Yavapai County, Arizona, known as the Non-Federal Parcel-Tangle Creek, to be administered by the TNF
- 147 acres in Gila County, Arizona, known as the Non-Federal Parcel-Turkey Creek, to be administered by the TNF
- 149 acres near Cave Creek, Arizona, known as the Non-Federal Parcel-Cave Creek, to be administered by the TNF
- 640 acres north of Payson, Arizona, known as the Non-Federal Parcel-East Clear Creek, to be administered by the Coconino National Forest

The following parcels will be transferred from Resolution Copper to the Department of the Interior:

- 3,050 acres near Mammoth, Arizona, known as the Non-Federal Parcel-Lower San Pedro River, to be administered by the Bureau of Land Management (BLM) as part of the San Pedro Riparian National Conservation Area
- 940 acres south of Elgin, Arizona, known as the Non-Federal Parcel-Appleton Ranch, to be administered by the BLM as part of the Las Cienegas National Conservation Area
- 160 acres near Kearny, Arizona, known as the Non-Federal Parcel-Dripping Springs, to be administered by the BLM

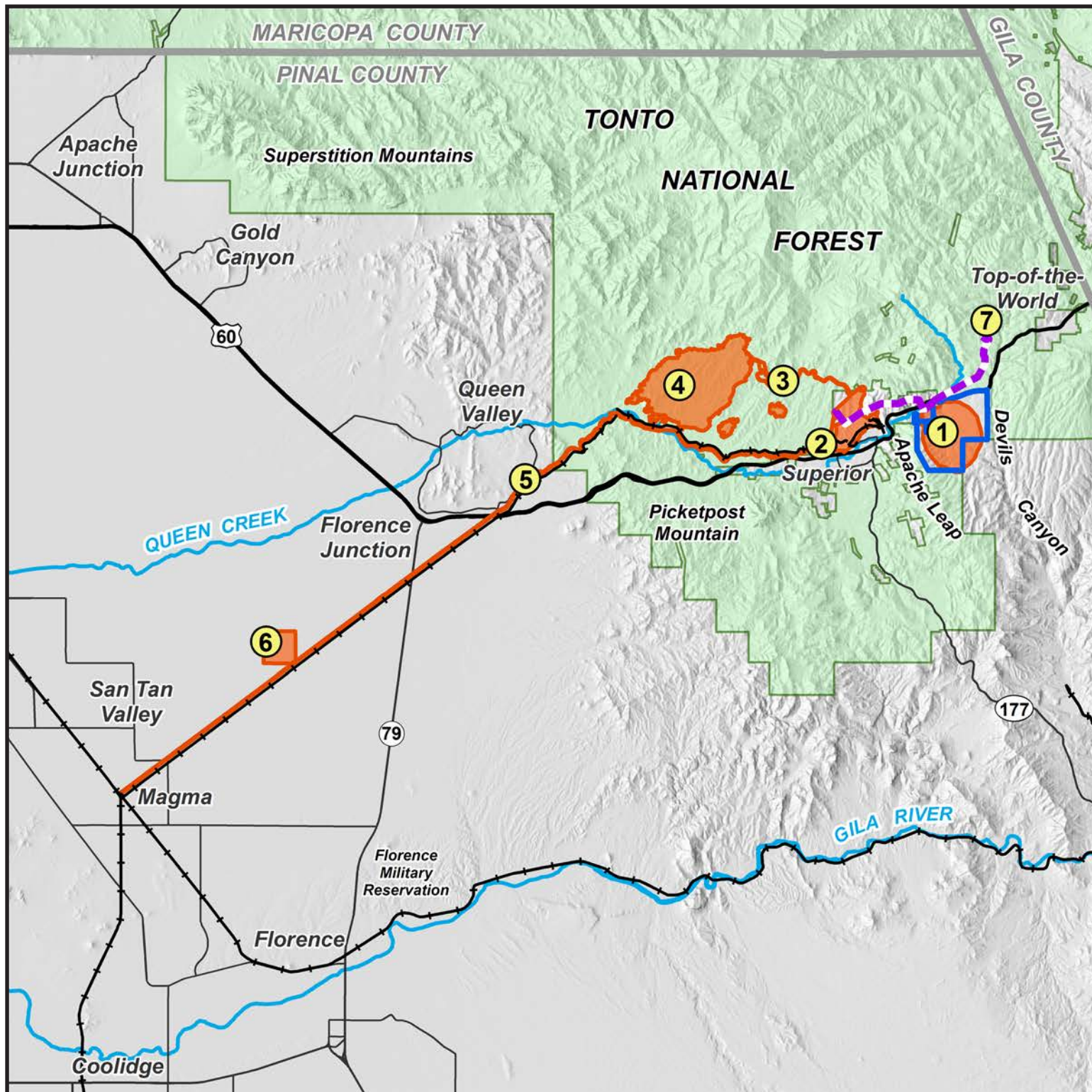
Also as a requirement of the NDAA , if requested by the Town of Superior, Arizona, the following land will be transferred from the TNF to the Town of Superior:

- 30 acres associated with the Fairview Cemetery
- 250 acres associated with parcels contiguous to the Superior Airport
- 265 acres of reversionary interest associated with the Superior Airport

At this time, the Town of Superior has not requested this land transfer.



# Mining Proposal Components



**Project Areas**

- ① Underground Mine and East Plant Site, which includes shafts and surface facilities.
- ② West Plant Site, which includes stockpiles, concentrator complex, administration, and infrastructure.
- ③ Tailings Corridor, which includes water pipelines, tailings pipelines, roads & power.

④ Tailings Storage Facility and Borrow Areas

- ⑤ MARRCO corridor, which includes MARRCO railroad, concentrate pipelines, water supply pipelines, power and pump stations, and well field.
- ⑥ Filter Plant and Loadout Facility
- ⑦ Silver King Substation

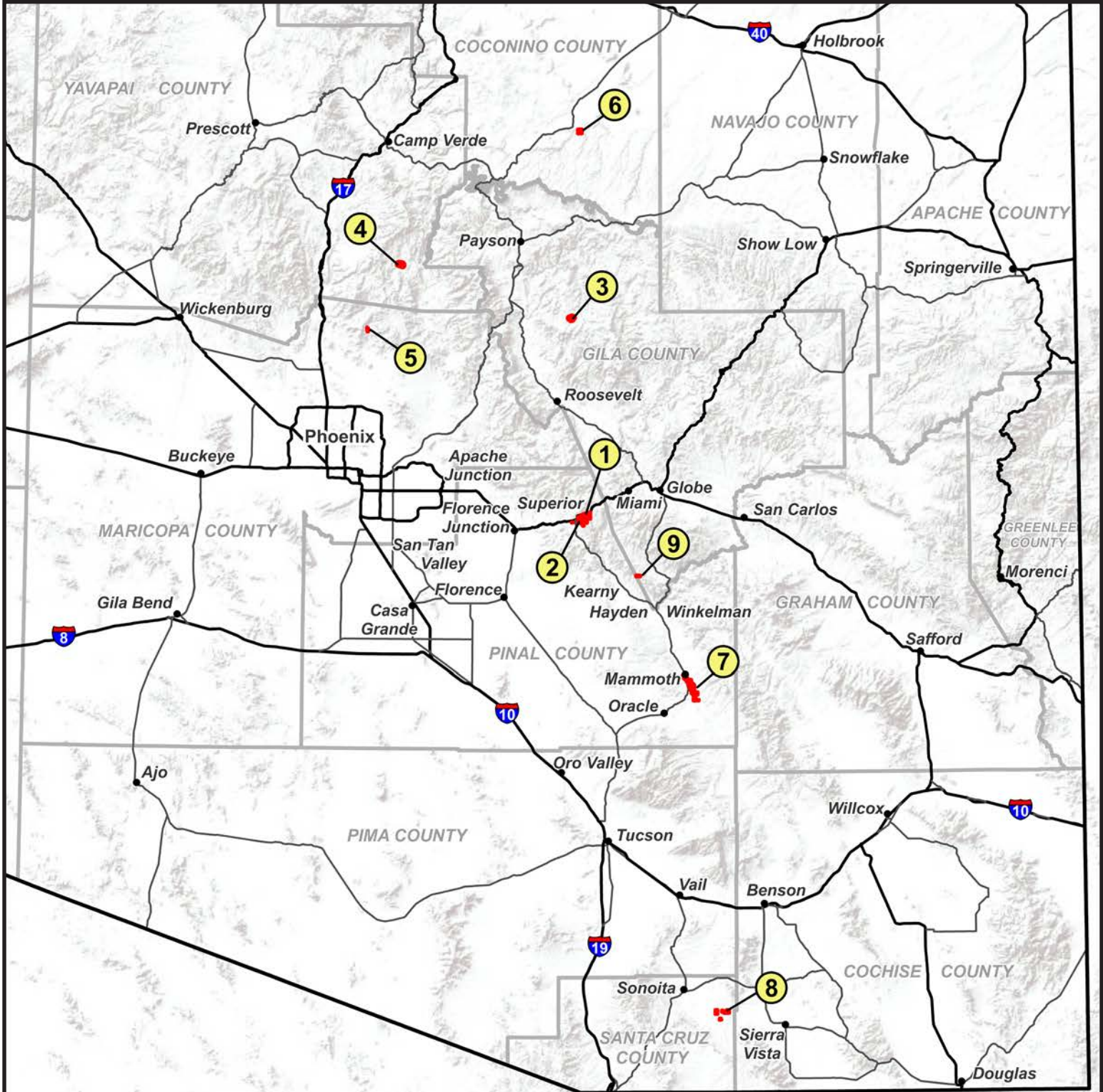
**Land Ownership**

- USFS
- Land Exchange Parcel to be conveyed to Resolution Copper
- New Power Line





# Land Exchange Parcel Locations



**Transfer From Federal Government to Resolution Copper**

- ① Oak Flat (2,422 Acres)
- ② Apache Leap South End (110 Acres)
- ③ Turkey Creek (147 Acres)
- ④ Tangle Creek (148 Acres)
- ⑤ Cave Creek (149 Acres)
- ⑥ East Clear Creek (640 Acres)

**Transfer From Resolution Copper to Bureau of Land Management**

- ⑦ Lower San Pedro River (3,050 Acres)
- ⑧ Appelton Ranch (940 Acres)
- ⑨ Dripping Springs (190 Acres)

